



November 29, 2022

For \$6.75M, this park-facing East Side condo is for sale or rent, with 10 rooms to use however you wish



Options are many in this 3,225-square-foot condo on Manhattan's Museum Mile between East Harlem and Carnegie Hill; the combination of two apartments resulted in a collection of rooms that work as bedrooms (as many as six), playrooms or entertaining spaces, depending on your needs. What you can't change: a coveted spot on Central Park and amazing panoramic views of the park and Conservatory Gardens. Asking \$6,750,000, this sun-filled home can be found in the Emery Roth-designed 1920s building at 1200 Fifth Avenue known as The Park View. Not ready for a commitment? You can rent the pretty pre-war home for \$25,000/month.



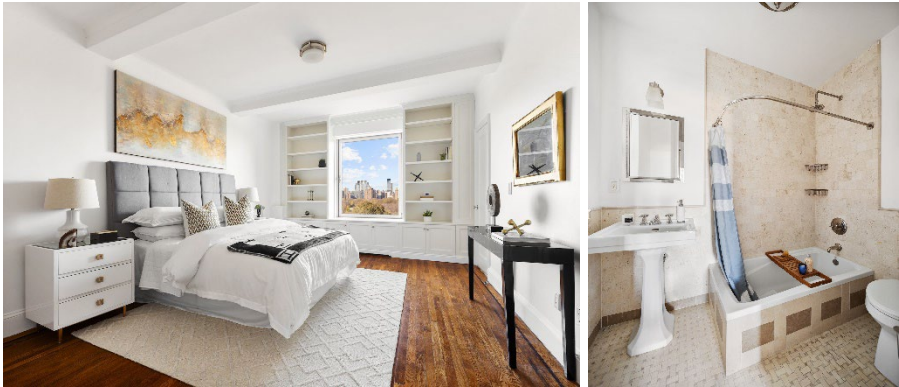
The classic Art Deco apartment has retained original details like herringbone floors, high beamed ceilings, and elegant French doors. You'll find through-wall AC in each room.



An elevator opens directly into an elegant foyer and a long gallery. A large living room and formal dining room overlook Central Park through oversized picture windows. An adjacent library provides a quieter entertaining space and could be used as a bedroom.



A sleek and well-appointed galley kitchen features appliances by Wolf, Miele, and Subzero and a wine refrigerator. Marble countertops complement custom millwork. An adjacent breakfast nook accesses a small staff room with a full bath, laundry facilities, and an adjacent pantry overlooking the park.



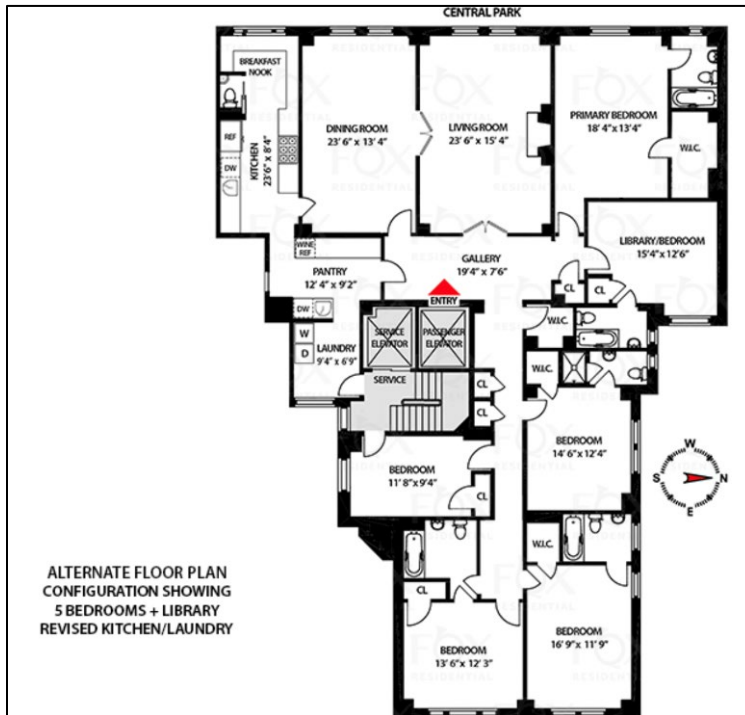
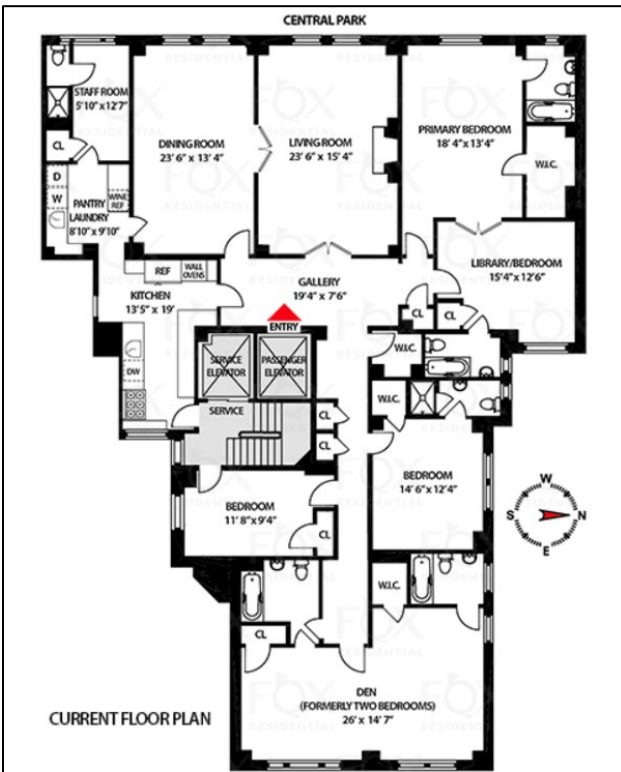
The graciously sized park-facing primary bedroom offers a huge walk-in closet. All rooms feature an en-suite marble bath, making them ready to become bedrooms if needed.



There are four additional bedrooms, including two former bedrooms that have been combined into a sprawling den. The two rooms can easily be bedrooms again or kept as-is for a spacious playroom, media room, atelier, or office. See the photo gallery below for alternate and current floor plans.



This unusually flexible apartment comes with two basement storage bins. Amenities include a 24-hour doorman/concierge, a live-in building manager, a fitness room, and a bike room, and the pet-friendly condo allows 90 percent financing.



Fox Residential by Barbara Fox and Maggie Peters